

## System Software

### New System Software for PN4000 / PN6000

**PN4000 Version PSN\_1.6.3.7**

**PN6000 Version PSN\_1.6.4.7**

#### How to perform the update

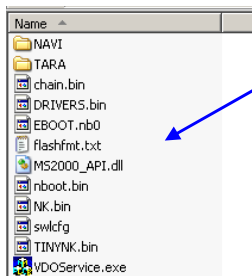
The files required for the update are stored as compressed data in a Zip file for free download from our internet presence. Once unpacked the files provide a so-called card image which shall be copied to an empty SD card.

Please follow the below-mentioned steps:

- § Download the file corresponding to your System from the Internet to the hard disk of your computer
  - PN4000 update file: PSN\_1.6.3.7.zip
  - PN6000 update file: PSN\_1.6.4.7.zip

Format your SD card. Before formatting makes sure that there are no more files on the SD card which you still want to use later on. Minimum required capacity is 128 MB, max. 2 GB.

- § Extract the zip archive and copy all files 1:1 onto an empty SD card (do not add or leave out any files)



**Note:** Do not use other decompression software than WinZip since it may cause errors. Connect the PN4000 or PN6000 to the original 12V AC/DC adapter

- § Switch off the PN4000 or PN6000 by pressing the on / off button
- § Take out the SD Card containing the map data and insert the update SD Card
- § Start the update by pressing the reset button
- § The software update starts automatically and will take about 15 minutes
- § After update has finished take out the update card and insert the map data SD Card again
- § Push the displayed button restart and the system starts again
- § The update process is finished now. The "system info" menu shows "PSN\_1.6.3.7" for PN4000 or "PSN\_1.6.4.7" for PN6000.

#### Improvements:

- § Improved performance
- § Improved stability
- § Bugfixing

