



# Memory

## Tools

This procedure requires the following tools:

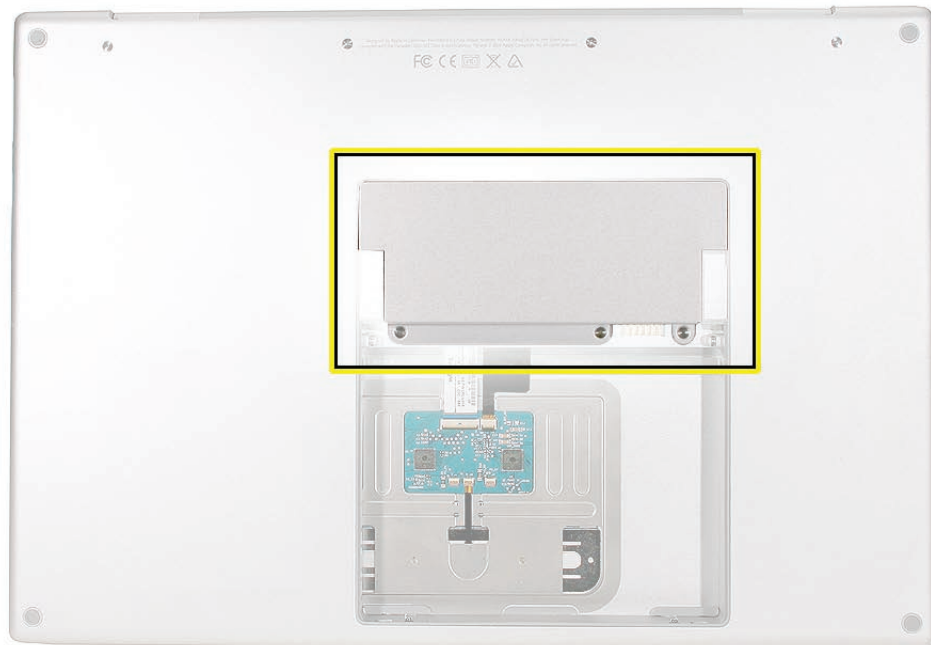
- #0 Phillips screwdriver (magnetized)
- Clean non-marring work surface
- ESD wrist strap and mat

## Preliminary Steps

Before you begin, remove the following:

- [Battery](#)

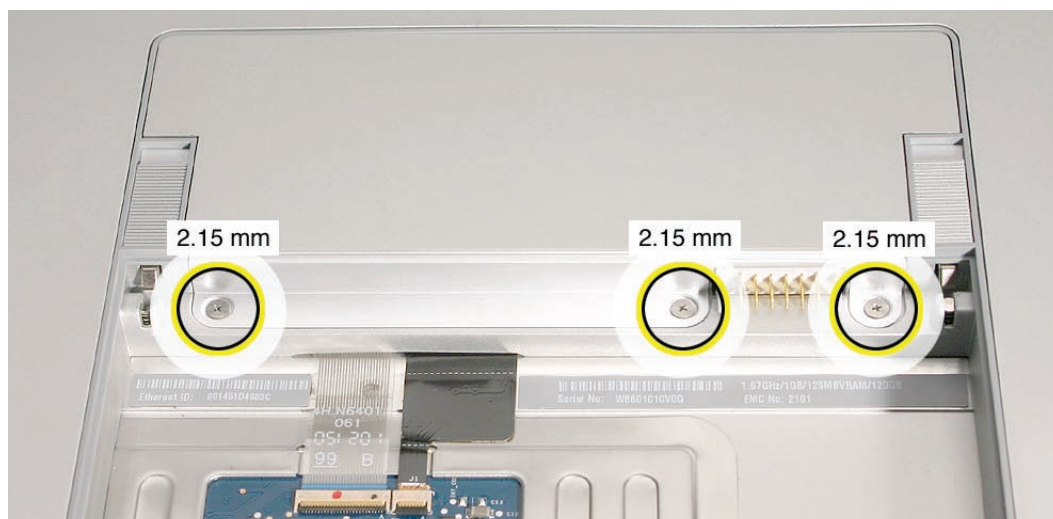
## Part Location



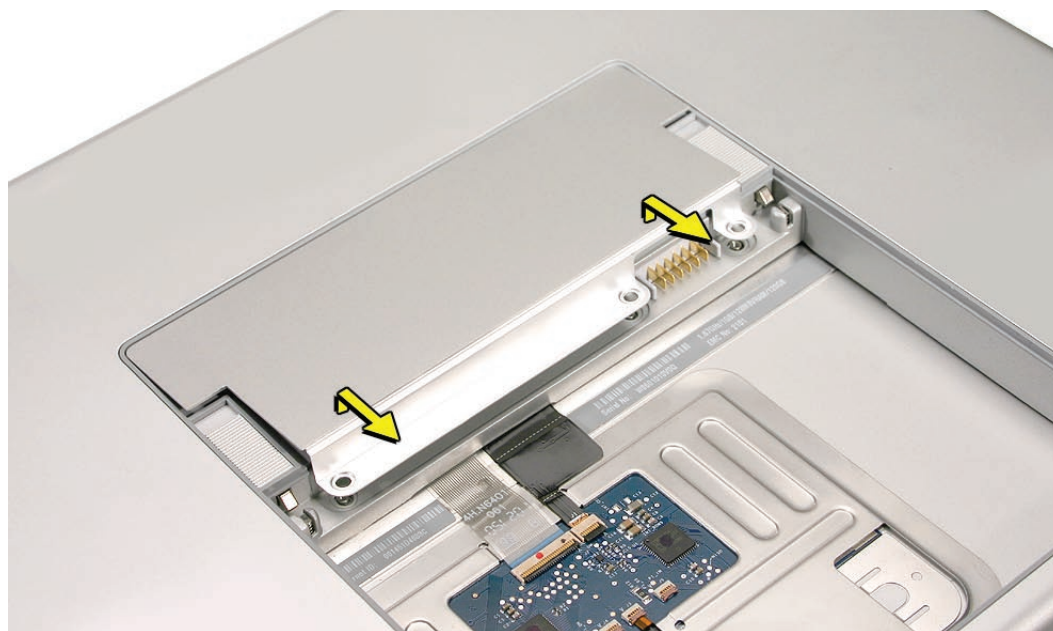
## Procedure

**Warning:** If the computer has been recently operating, allow it to cool down before performing this procedure.

1. Place the computer face down.
2. Remove the three screws from the memory door.



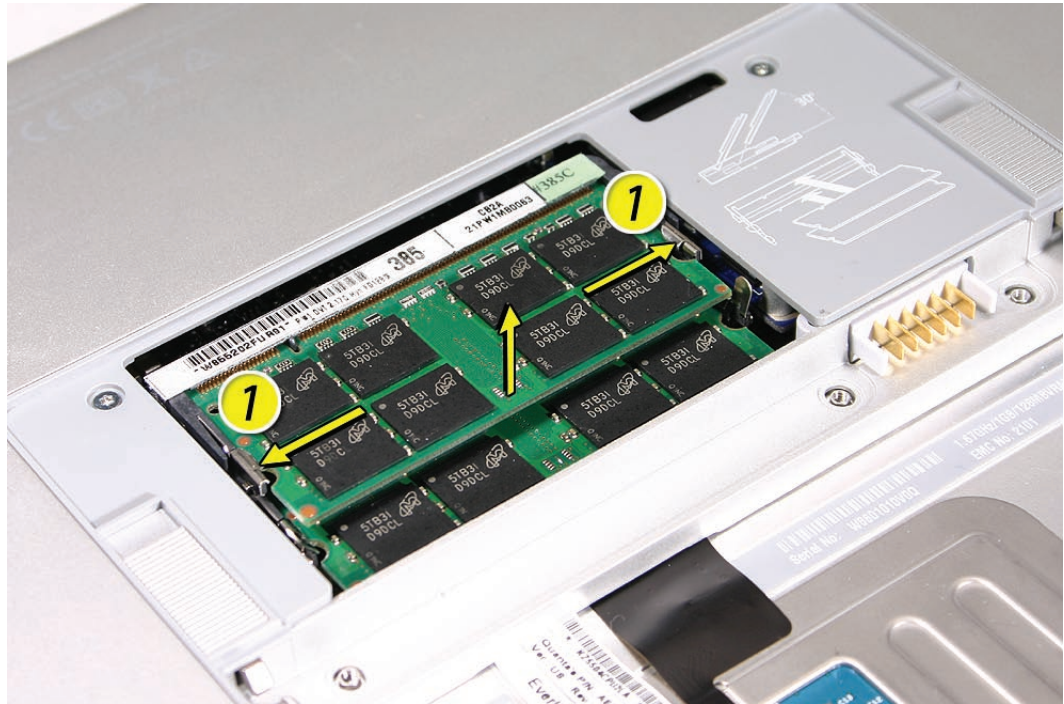
3. Remove the door, as shown.



### Notes:

- If only one memory card is installed, the factory installs it in the bottom memory slot.
- Memory must be removed from the top slot before removing from the bottom slot.

4. To remove memory cards, carefully spread the two locking tabs for the slot (top or bottom) away from the card on both sides and allow the card to pop up slightly.



5. Pull the card straight back and out of the memory slot.





---

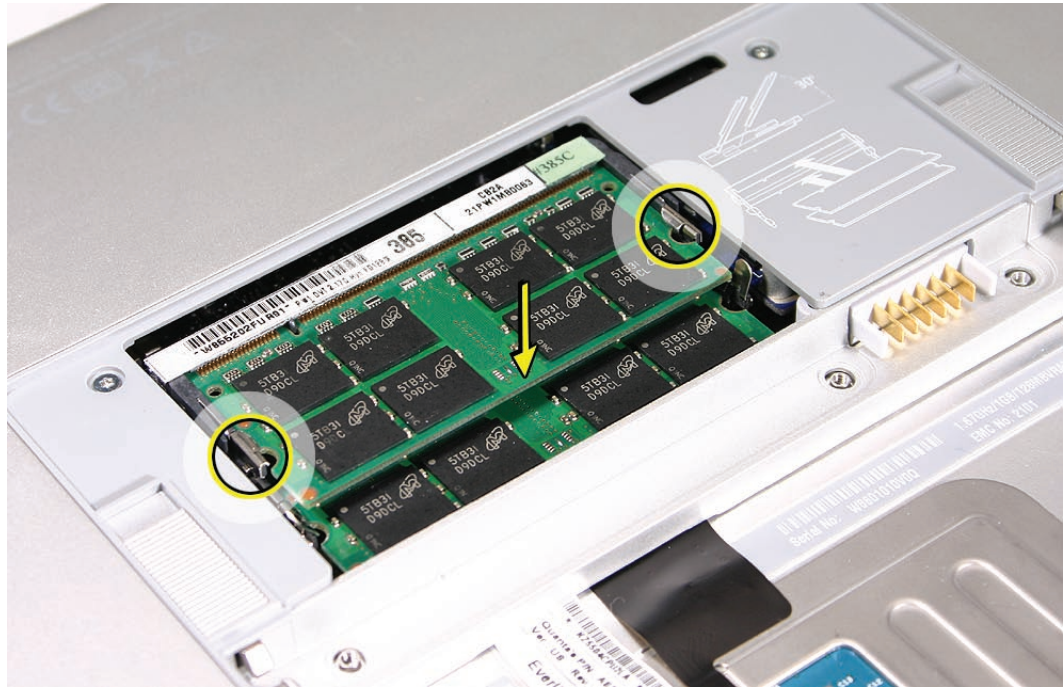
## Replacement Procedure

### Notes:

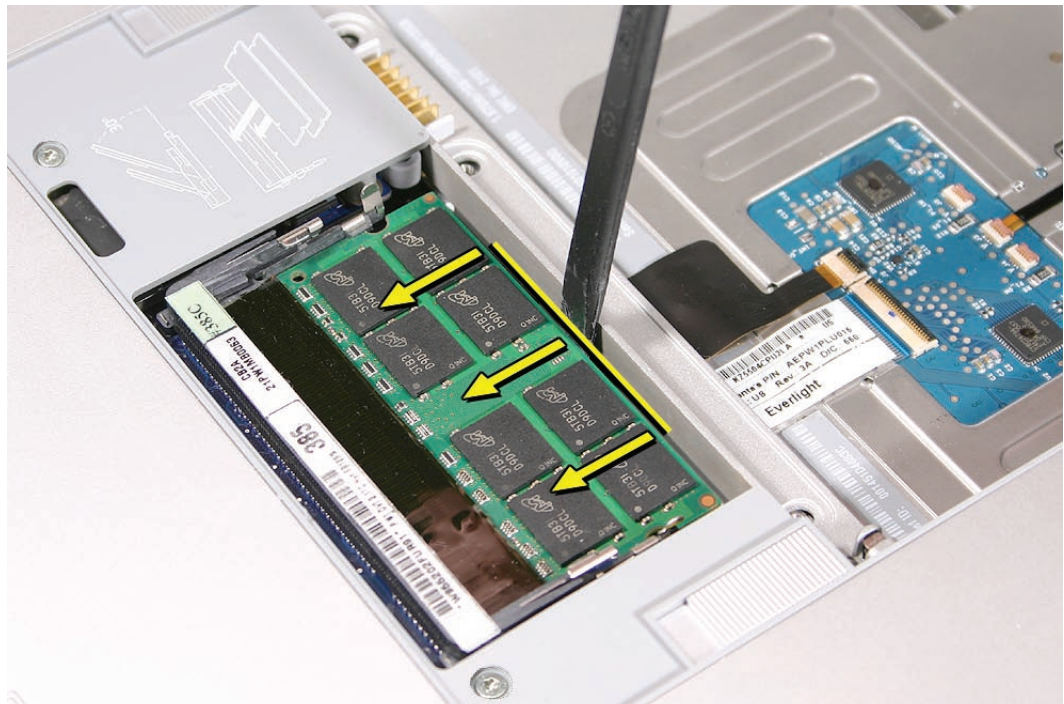
- DDR memory cards do not fit in this slot (different notch location).
  - If installing two cards, install into the bottom slot first.
  - When finished installing memory into the bottom slot, use a black stick leveraged against the frame to push the back of the card toward the slot to verify that the card is firmly seated.
  - Align the notch in the memory card with the tooth in the slot before inserting.
1. To install a memory card, insert the card at a 25-degree angle behind the locking tabs of the top slot.
  2. Firmly push the card straight into the slot until it is fully and securely seated along its length.  
**Note:** If the back of the card drops down before it is fully seated, raise it up enough to push it fully into the slot.



3. When the card is fully seated, push the card straight down until the tabs click onto both sides of the card, locking it into place.



4. To ensure that the memory cards are fully and securely seated, for the lower card, use a black stick leveraged against the frame to evenly push along the back of the card.



- 
5. For the upper memory card, push with your thumbs to verify the card is fully seated.



6. Check that the cards are secured by the brackets on both sides.
7. Install the memory door.
8. Replace the battery.
9. **Use Apple System Profiler to verify that the memory is recognized. (Choose the menu bar Apple logo (🍏) > About This Mac, click More Info..., select the System Profile tab, open the Memory Overview.)**