

Technical Procedure

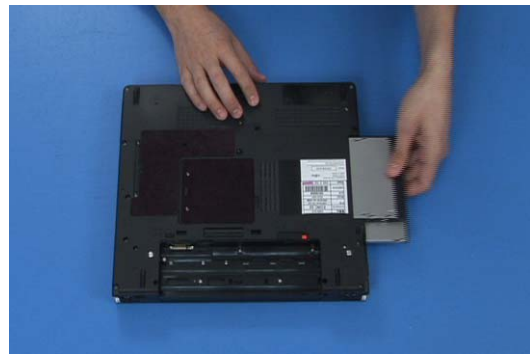
LifeBook E8110 Disassembly

ESD Precautions are required when working on this LifeBook computer.

Make sure the LifeBook is turned off before beginning this disassembly procedure.



1. Turn the LifeBook over and remove the battery.



2. Slide out the optical drive.



3. Extract 2 screws from the RAM cover.



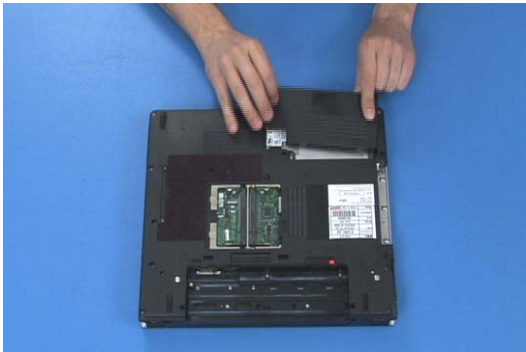
4. Lift the cover off.



5. Press out on the locking clips to release the RAM and lift it out.



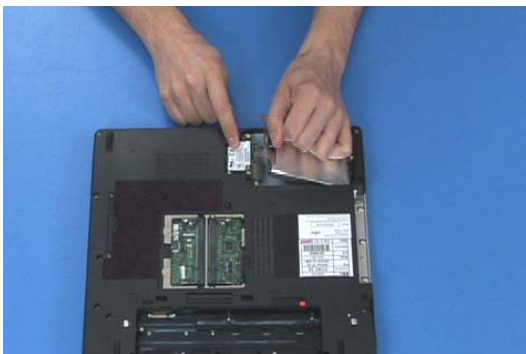
6. Extract 2 screws from the Hard Disk Drive cover.



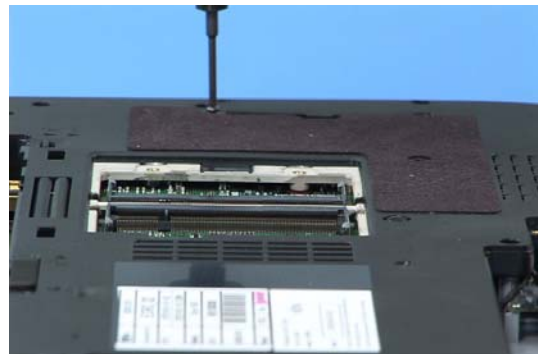
7. Lift the cover off.



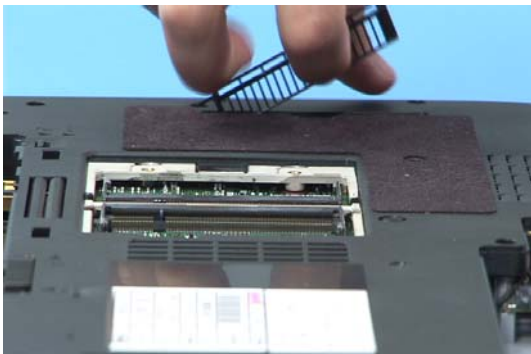
8. Extract 2 screws from the drive.



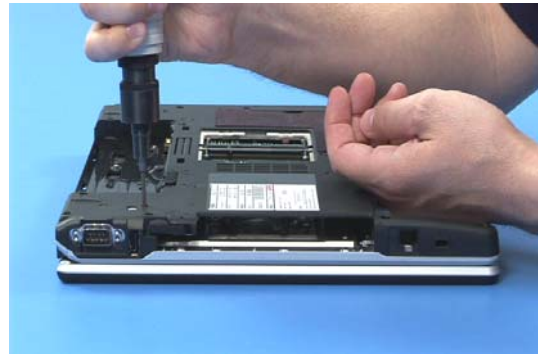
9. Slide it outward to disconnect it and lift it out.



10. Extract 2 screws from the plastic filter.



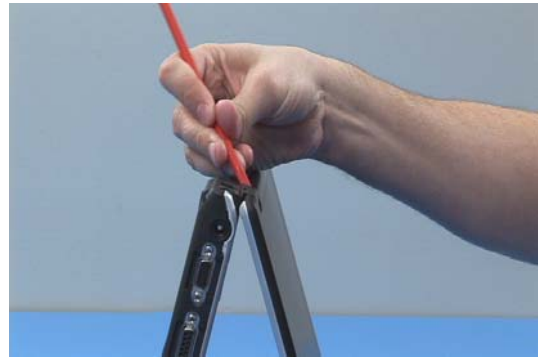
11. Lift the filter out.



12. Extract 22 lower case screws.



13. Turn the LifeBook over, open it partially and stand it on its front.



14. Use a plastic screwdriver to release the clip behind each hinge.



15. Open the LifeBook and lay it flat.



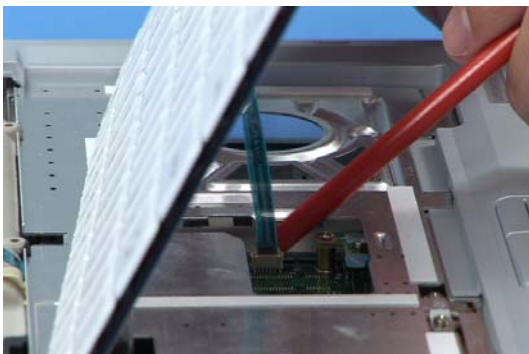
16. Use the plastic screwdriver to pry up the status/application panel cover.



17. Disconnect the speaker cable.



18. Slide the keyboard forward and tilt it up.



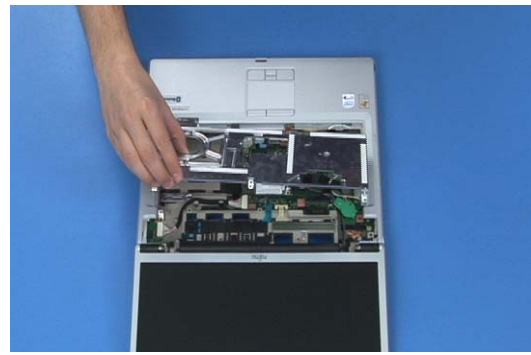
19. Disconnect the TouchPoint cable.



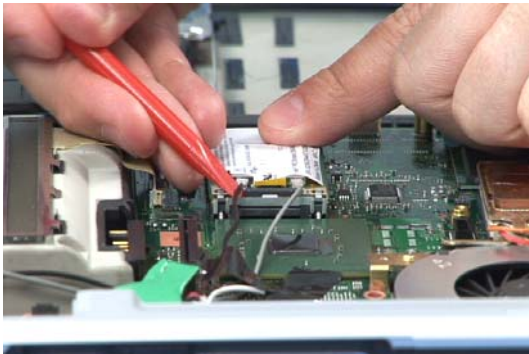
20. Disconnect the keyboard ribbon cable and remove the keyboard.



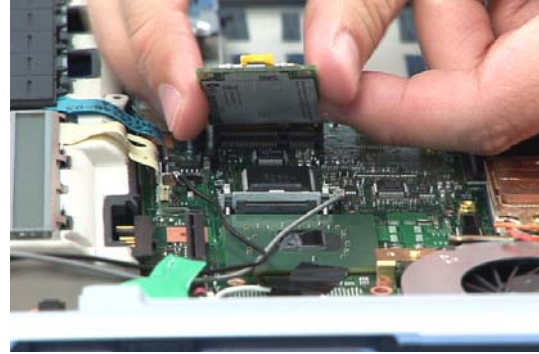
21. Extract 6 screws from the metal shield.



22. Remove the shield.



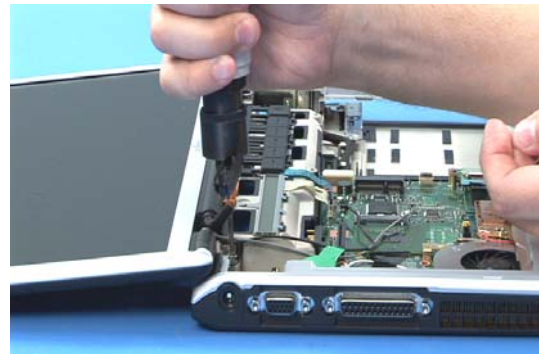
23. Disconnect the 2 antenna cables from the WLAN card.



24. Press out on the locking clips to release the WLAN card and lift it out.



25. Disconnect the display cable from the system board.



26. Extract 2 screws from each of the 2 hinges.



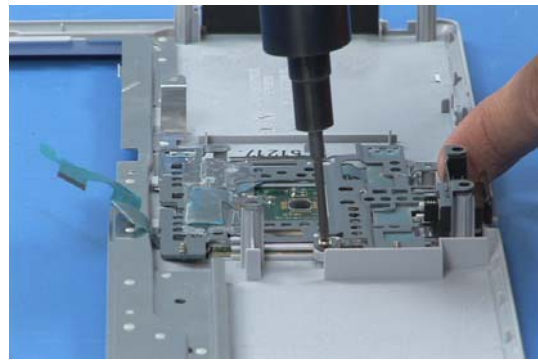
27. Lift the display off the lower assembly.



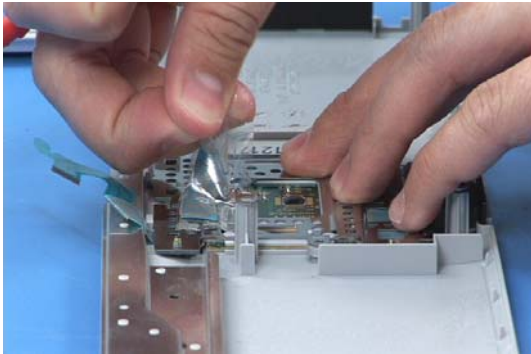
28. Disconnect the GlidePoint cable.



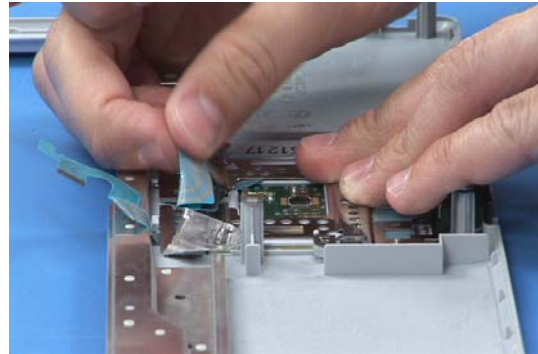
29. Lift off the upper cover and turn it over.



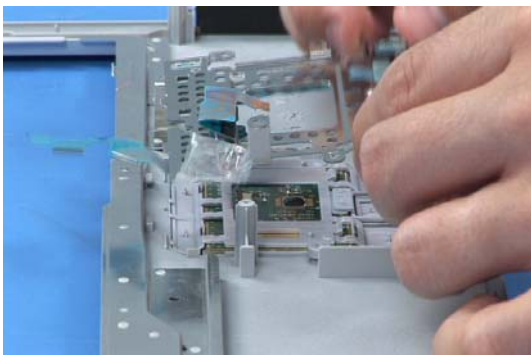
30. Extract 4 screws from the GlidePoint assembly.



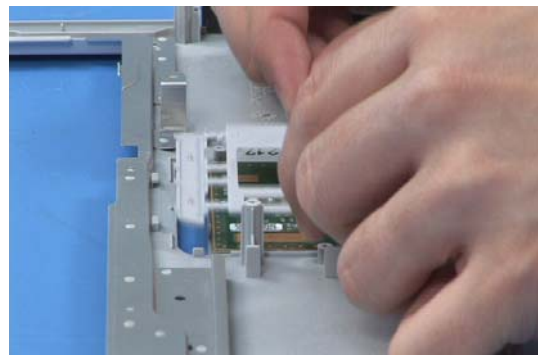
31. Remove the tape from the ribbon cable.



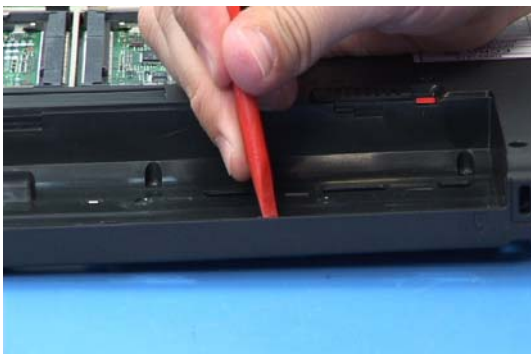
32. Disconnect the cable.



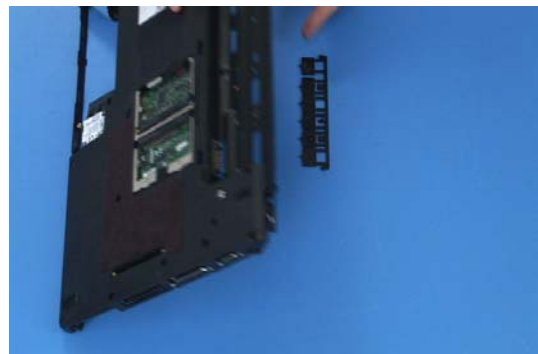
33. Lift the GlidePoint assembly out of the upper case.



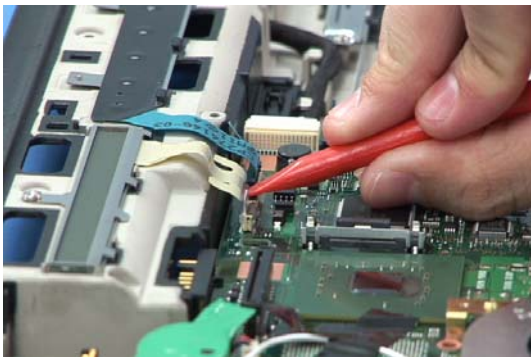
34. Lift the GlidePoint buttons out of the upper case.



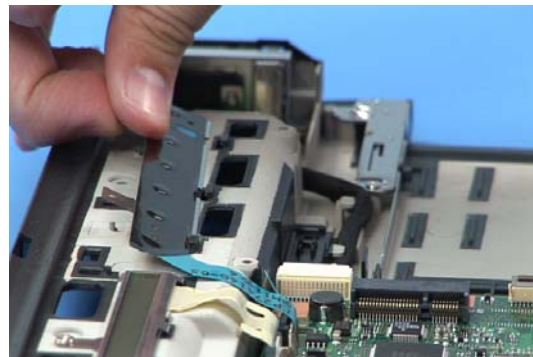
35. Turn the lower case over and release the clips securing the application panel buttons.



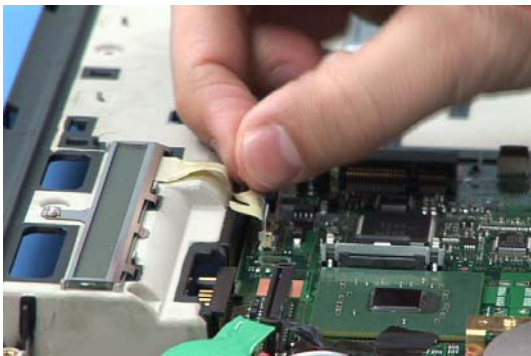
36. Turn the lower case back over and set the buttons aside.



37. Disconnect the button PCB cable.



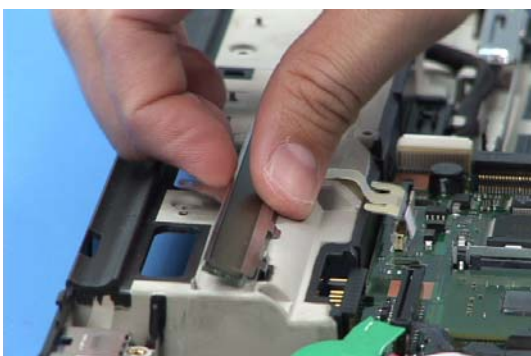
38. Lift the PCB out.



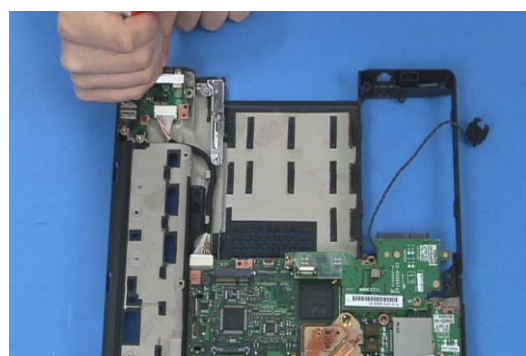
39. Disconnect the status LCD cable from the system board.



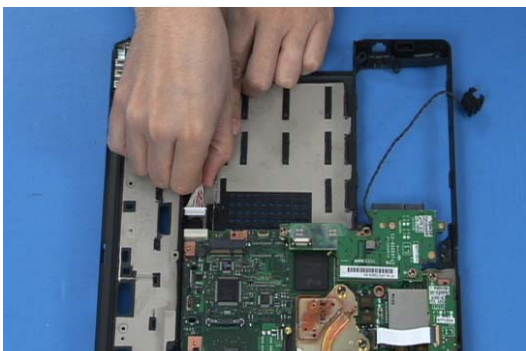
40. Extract 1 screw from the status LCD bracket.



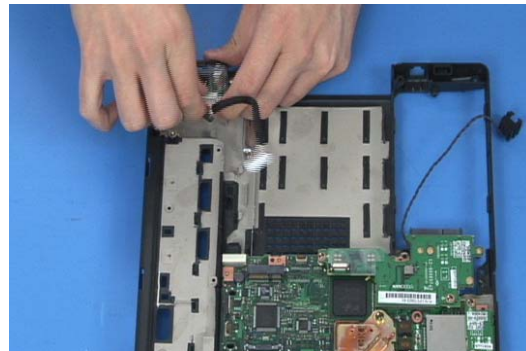
41. Lift it and the LCD out.



42. Extract 1 screw from the USB/External VGA connector PCB.



43. Disconnect its cable from the system board.



44. Lift the PCB out.



45. Extract 2 screws from the disk drive daughterboard.



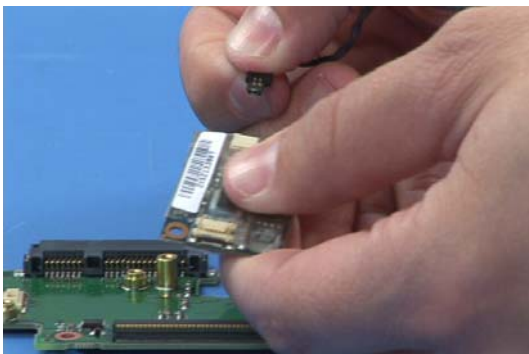
46. Lift the daughterboard out.



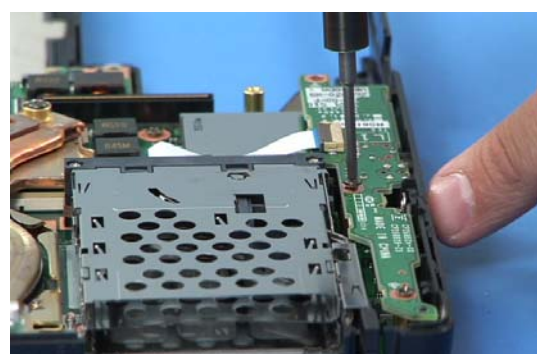
47. Turn the daughterboard over and extract the 2 screws securing the modem.



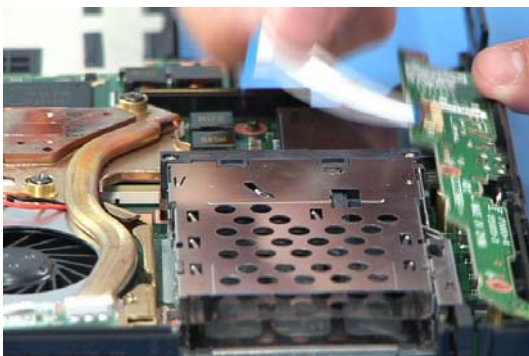
48. Lift the modem off the daughterboard.



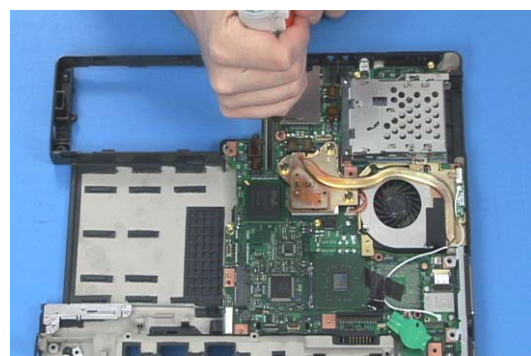
49. Disconnect the RJ11 connector cable from the modem.



50. Extract 3 screws from the audio IO PCB.



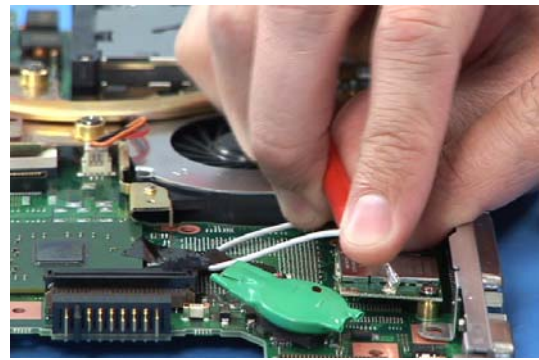
51. Disconnect the PCB's cable and lift it out.



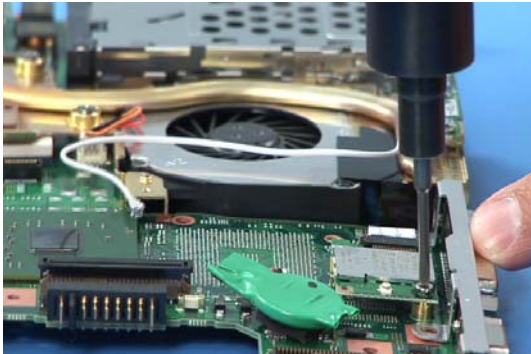
52. Extract 2 screws from the system board.



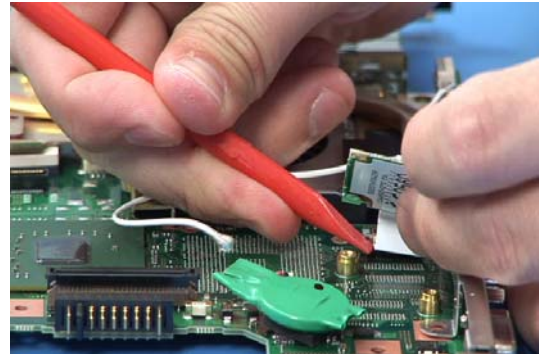
53. Lift the board out.



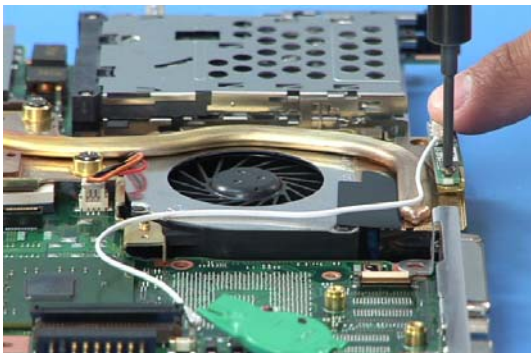
54. Disconnect the antenna cable from the Bluetooth PCB.



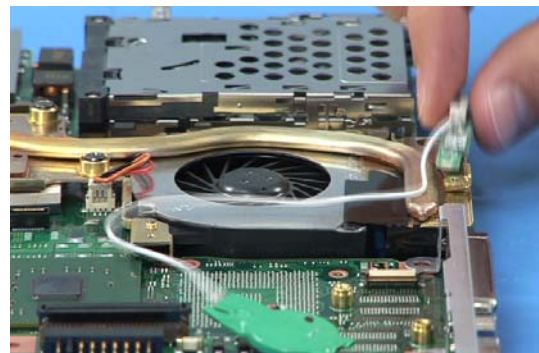
55. Extract 2 screws from the PCB.



56. Lift the PCB off the system board and disconnect its cable.



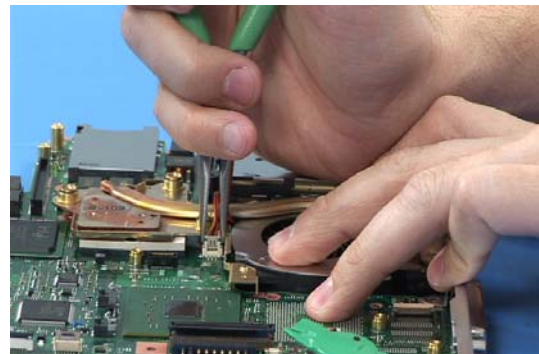
57. Extract 1 screw from the Bluetooth antenna PCB.



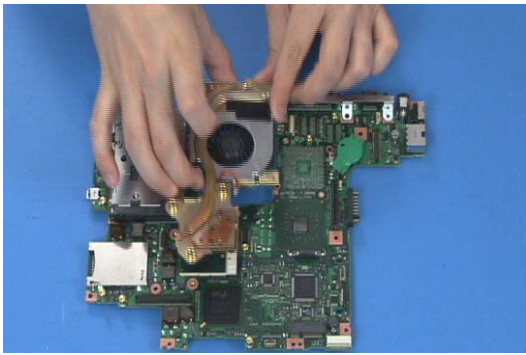
58. Lift the PCB off.



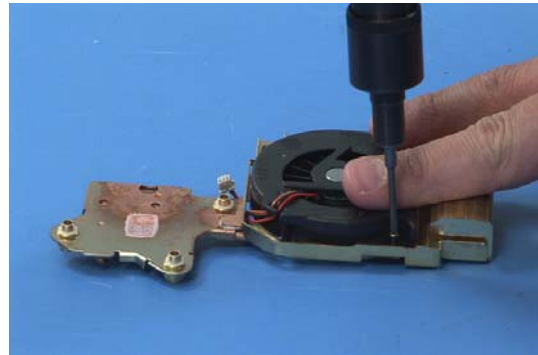
59. Extract 3 screws from the CPU heat sink.



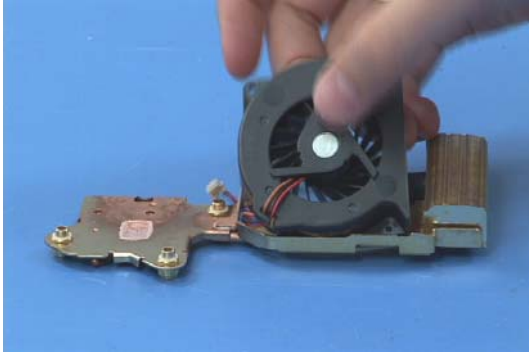
60. Disconnect the fan cable.



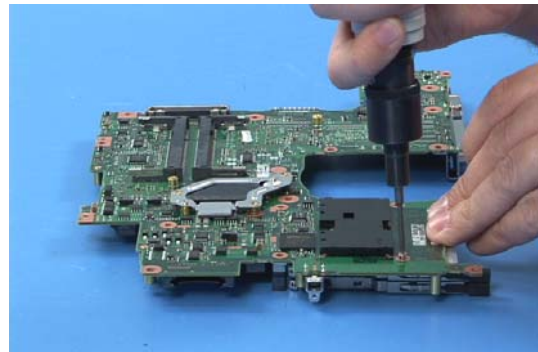
61. Lift the heat sink off.



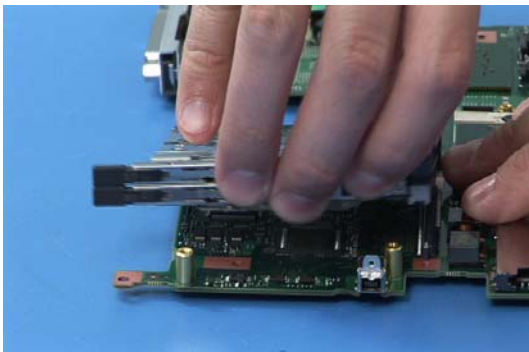
62. Turn the heat sink over and extract the 2 screws securing the fan.



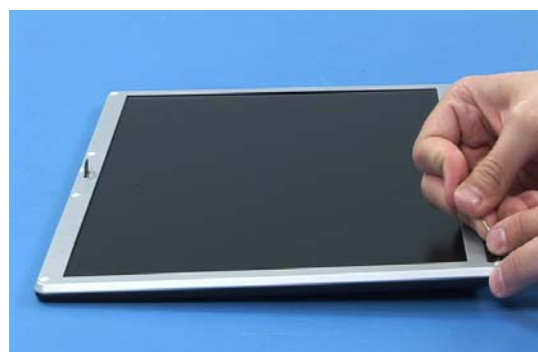
63. Lift the fan off.



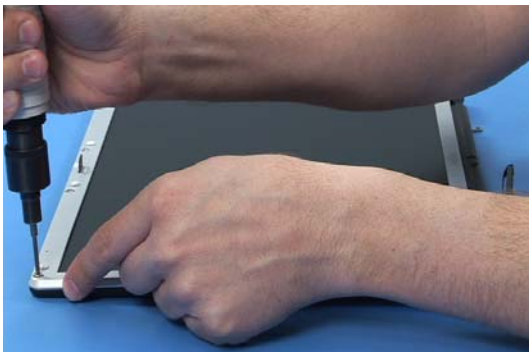
64. Turn the system board over and extract 4 screws securing the PC Card slot.



65. Turn the system board back over and lift the slot off.



66. Remove 7 screw covers from the front of the display.



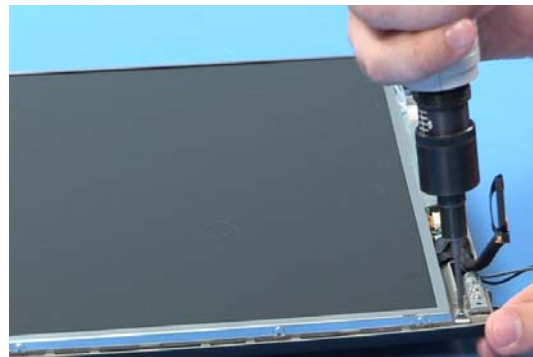
67. Extract the 7 screws underneath.



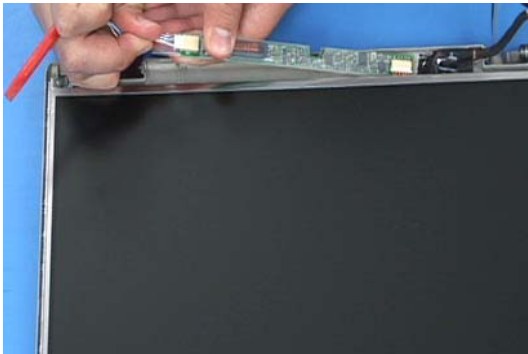
68. Pry around the perimeter of the display with the plastic screwdriver to release the front cover from the rear.



69. Lift the front cover off.



70. Extract 1 screw from each of the lower corners of the LCD.



71. Pry out the inverter and disconnect the backlight cable from it.



72. Disconnect the power cable from the inverter.



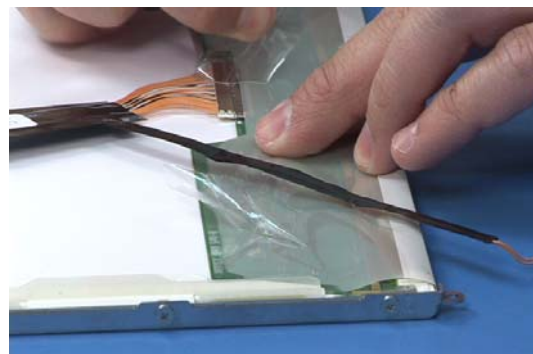
73. Disconnect the microphone and lift it out.



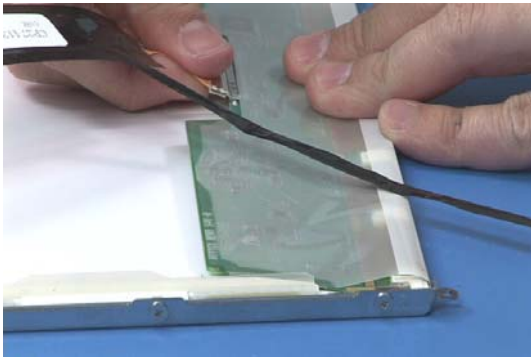
74. Lift the LCD out of the rear cover and turn it over.



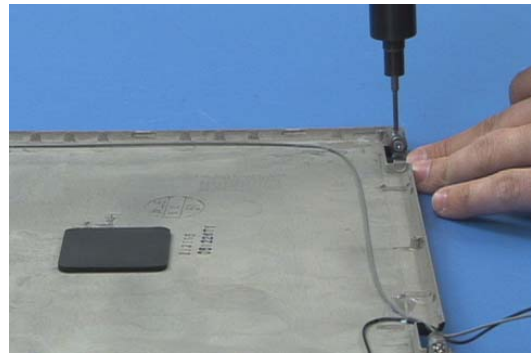
75. Remove the tape from the microphone cable.



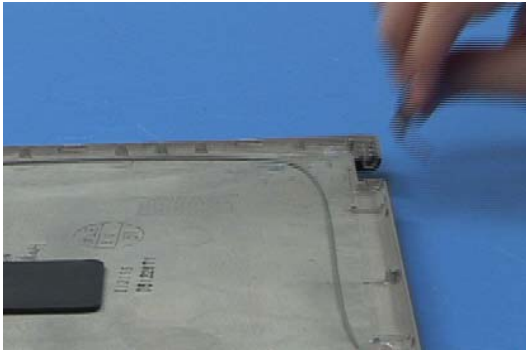
76. Remove the tape from the LCD cable.



77. Disconnect the LCD cable and set it and the LCD aside.



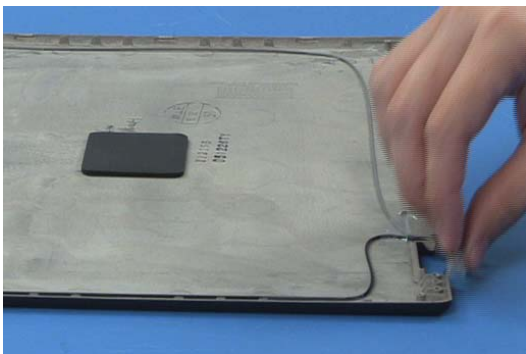
78. Extract 2 screws from the right hinge.



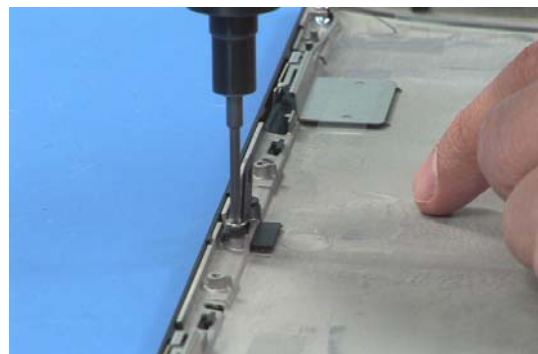
79. Remove the hinge.



80. Extract 2 screws from the left hinge.



81. Remove the hinge.



82. Extract 2 screws from the display latch.



83. Remove the latch.